

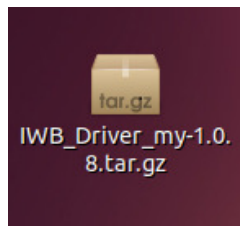
Quick user guide for Linux Driver

Note:

Linux driver support versions, Ubuntu 9.04, 9.10, 10.04, 10.10, 11.04, 11.10, 12.04
Other versions are still under developing.

1) Linux Driver Setup

- 1) Extract Software



- 2) Enter the depressed folder of IWB through Terminal

```
qch@qch-desktop:~$ cd IWB_Driver/  
qch@qch-desktop:~/IWB_Driver$ ls  
install.sh  setup  uninstall.sh  
qch@qch-desktop:~/IWB_Driver$ sudo ./install.sh  
[sudo] password for qch:  
setup IWB-Driver 1.0.8  
qch@qch-desktop:~/IWB_Driver$
```

- 3) Install the software by inputting “sudo ./install.sh”, Then press Enter to input the root password. Then press Enter, while it show “setup IWB-Driver 1.0.8”, the installation successes.

2) Start IWB Driver

- 1) Click Application
- 2) Click Education then IWB Driver.



3) IWB Driver will be called up.



Main Menu:

User profile

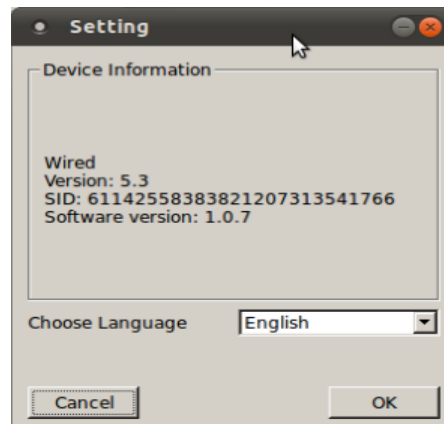
Select the file that you calibrate then next time user can just call the file to finish calibration if both whiteboard the projector keep the same.

Calibration

Calibrate whiteboard

Setting

Select language and check whiteboard firmware version other information that regarding whiteboard.



Wireless Setting

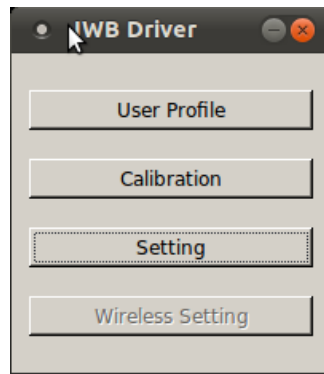
Wireless whiteboard setting, to detect whiteboard and pair whiteboard.

3) Connect Whiteboard

1) USB version

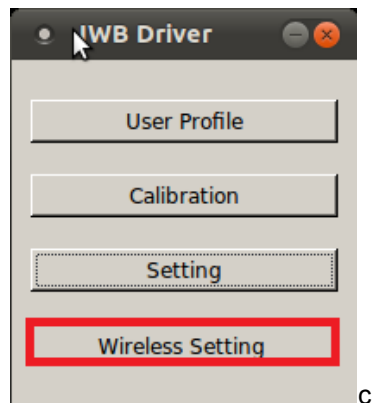
- a) Run IWB driver
- b) Connect USB cable to PC

c) Whiteboard connected.



2) Wireless version

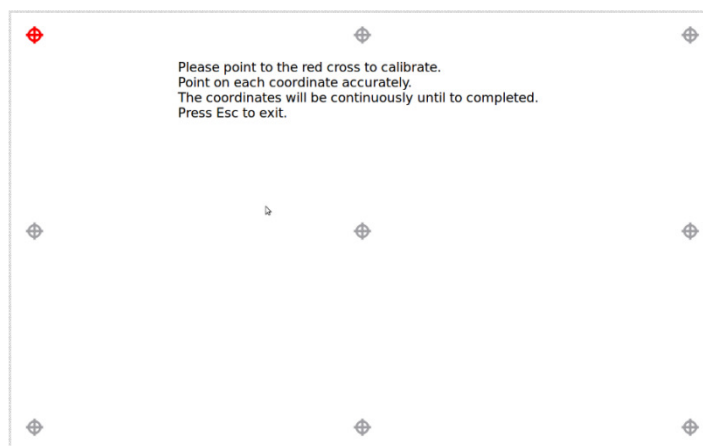
- a) Run IWB driver
- b) Connect USB cable with Power adapter, receiver with PC.
- c) Wireless Whiteboard connected



4) Calibration

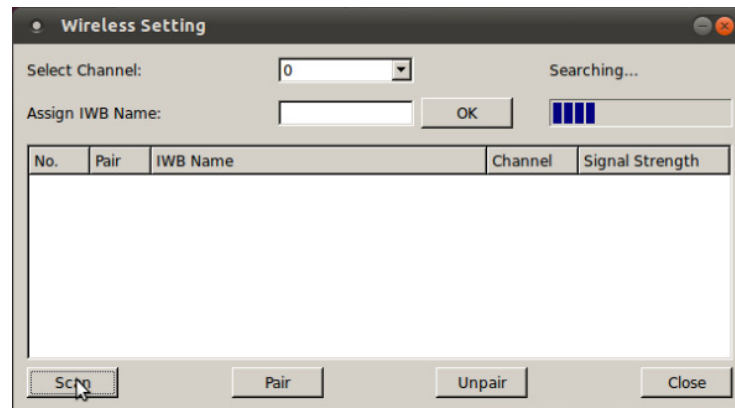
1) USB version

Click Calibration on the Driver Menu, then the screen for calibration will show up, then please point to the red cross on each point to do the calibration.

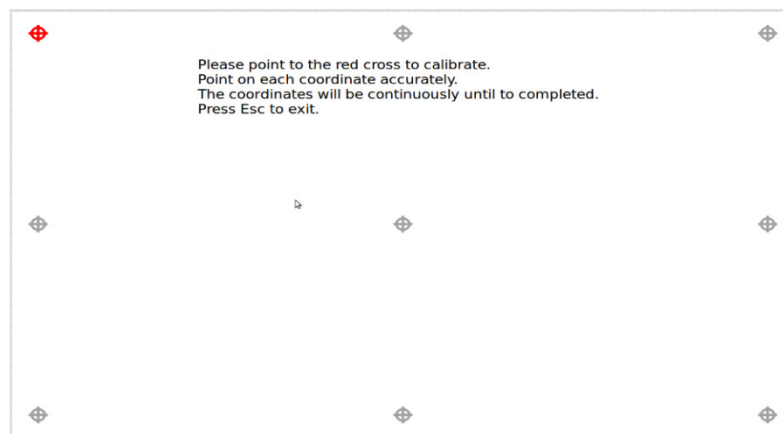


2) Wireless version

- a) Click Wireless Setting, Whiteboard will detect (scan) automatically.
- b) Pair the target whiteboard.



- c) Then click Calibration on Driver Menu to do the calibration. After calibration whiteboard can use.



5) Uninstall IWB Driver

- 1) Open Terminal
- 2) Switch to the IWB depressed folder then input "sudo ./uninstall.sh"

```
qch@qch-desktop:~$ cd IWB_Driver/  
qch@qch-desktop:~/IWB_Driver$ sudo ./uninstall.sh  
[sudo] password for qch:  
Sorry, try again.  
[sudo] password for qch:  
remove IWB-Driver  
qch@qch-desktop:~/IWB_Driver$
```

- 3) Press Enter, input root password then Enter while "remove IWB-Driver" appear means IWB uninstall successfully.